

Self-reported oral health is associated with systemic health outcomes and all-cause mortality

Yau-Hua Yu, DMD, DMSc; Bjorn Steffensen, DDS, PhD; Daniel I. Chasman, PhD; Julie E. Buring, ScD

ABSTRACT

Background. Self-reported oral health questions (OHQs) are used commonly for epidemiologic surveillance of periodontal disease (PD). The authors' objective was to investigate how OHQs are associated with well-established systemic comorbidities of PD and their impact on all-cause mortality. The authors hypothesized that OHQs exhibit associations with systemic comorbidities similar to PD.

Methods. Two independent data sets were used to achieve these objectives: the Women's Health Study, a prospective cohort of women 45 years or older with self-reported information on PD, OHQs, cardiovascular disease, diabetes, and osteoporosis in various timeframes (continuous from 1992) and the National Health and Nutrition Examination Survey (NHANES), with data on OHQs and linked mortality (1999-2018). The authors applied multivariate logistic regression models and Cox proportional hazard regression survival analyses to test their hypotheses.

Results. The Women's Health Study participants who reported having PD until 2006 were more likely to later report deteriorating oral health, bone loss around their teeth, or periodontal treatment in 2018. Self-rated fair or poor oral health was independently associated with increased risk of cardiovascular disease (odds ratio, 1.39; 95% CI, 1.14 to 1.69; $P < .001$), diabetes (odds ratio, 1.21; 95% CI, 1.02 to 1.43; $P = .028$), and osteoporosis (odds ratio, 1.60; 95% CI, 1.38 to 1.84; $P < .001$). National Health and Nutrition Examination Survey participants who self-rated fair or poor oral health had higher risks of all-cause mortality (hazard ratio, 1.18; 95% CI, 1.02 to 1.37; $P = .027$).

Conclusions. Self-reported oral health had a similar magnitude of associations with systemic comorbidities as established with PD previously. Moreover, self-rated fair or poor oral health, suboptimal dental visits, or infrequent flossing were associated with increased all-cause mortality.

Practical Implications. These results support the use of OHQs in assessing systemic connections, especially when clinical dental access is limited. This clinical trial was registered at [ClinicalTrials.gov](https://clinicaltrials.gov). The registration number is NCT00000479.

Key Words. Oral health; surveys and questionnaires; periodontal disease; cardiovascular disease; diabetes mellitus; osteoporosis; mortality.

JADA 2024;155(3):233-243

<https://doi.org/10.1016/j.adaj.2023.11.006>

Periodontal disease (PD) affects approximately 42% of US adults; 7.8% have its severe form.^{1,2} PD is a microbially induced chronic inflammatory disease; factors such as cigarette smoking and genetics influence severity.³ Researchers have established associations between PD and systemic conditions, including cardiovascular disease (CVD),^{4,5} type 2 diabetes,⁶⁻⁸ and osteoporosis.⁹ Furthermore, reports from large epidemiologic cohorts have used self-reported PD diagnosis to explore associations with cardiovascular outcomes.^{4,10-13}

Centers for Disease Control and Prevention and the American Academy of Periodontology developed plain-language oral health questions (OHQs) for assessing periodontal status.^{14,15} These OHQs have been validated and used in the National Health and Nutrition Examination Survey (NHANES)¹⁵ and were also adopted in the UK Biobank¹⁶ and the Million Veterans Program.¹⁷



ADA American Dental Association



Supplemental material is available online.

This article has an accompanying online continuing education activity available at: <http://jada.ada.org/ce/home>.

Copyright © 2024 American Dental Association. All rights reserved.

Self-reported OHQs provide new opportunities for exploring associations between oral health and systemic health in the absence of comprehensive clinical examinations. Survey approaches using OHQs may facilitate accessing oral health among disadvantaged populations who lack oral health care.¹⁸ However, unlike earlier reports based on self-reported PD diagnosis, there has been limited research on the association between OHQs and systemic health outcomes. In our study, we aimed to investigate how OHQs are related to well-established systemic comorbidities of PD and their impact on all-cause mortality. We hypothesized that OHQs have associations with systemic comorbidities that are comparable with PD, providing valuable insights in situations in which clinical assessment is unavailable.

The Women's Health Study (WHS) was a prospective cohort study in the United States; researchers investigated initially healthy women 45 years or older with multiple systemic health outcomes.¹⁹⁻²¹ Uniquely, WHS participants self-reported their PD diagnosis from 1992 through 2006, and, in 2018, validated OHQs were administered to the WHS participants. Previously, researchers found that there was a greater likelihood of developing PD among WHS participants with a family history of myocardial infarction.²² Therefore, we first aimed to compare the 2018 self-reported OHQs with earlier self-reported PD data (1992-2006) among the WHS participants. Secondly, analyses were conducted to assess connections between 2018 OHQs and established systemic comorbidities of PD, namely CVD,^{4,5} diabetes,⁶⁻⁸ and osteoporosis.⁹ Lastly, we re-examined such associations between OHQs and systemic health outcomes in the NHANES study by means of linking longitudinal mortality data. Researchers previously reported that the number of remaining natural teeth in NHANES data indicated risks of all-cause and disease-specific mortality.²³ Because NHANES data included dental visit history, self-rated teeth and gingival health, and dental flossing data linked to mortality through December 31, 2019, our investigation independently examined whether self-reported oral health correlated with all-cause mortality, which complements the WHS study.

METHODS

Study design and population

Figure 1 displays the chronological data collections in the WHS and NHANES data sets. Two independent studies were analyzed in this study. First, the WHS was a prospective cohort study that originally began as a clinical trial from 1992 through 1994 to test the benefits and risks of low-dose aspirin and vitamin E in the primary prevention of CVD and cancer. Annual follow-up questionnaires included self-reported PD status from the study inception through December 31, 2005. In 2018, oral health questions were administered to gather additional information on oral health conditions. Systemic outcomes, such as cardiovascular events and incidence of diabetes, were assessed annually throughout the study period (through December 31, 2018). In addition, osteoporosis was evaluated in 2009 using bone density reports. The WHS previously reported that women with baseline or incident PD had a higher risk of cardiovascular events. The second study used in this report was the NHANES. As of December 31, 2019, there were 59,062 participants eligible for mortality data linkage. We analyzed NHANES participants who had complete information on the number of teeth, demographic characteristics, education, income, cigarette smoking, body mass index (BMI) (calculated as weight in kilograms divided by height in meters squared), existing health conditions (ie, CVDs, diabetes, hypertension, and stroke), and physical activities. Among them, 29,510 NHANES participants provided information on their last dental visit (collected from 1999-2004 and from 2011-2018), 21,488 responded to the question regarding "self-rated oral health (teeth and gums)," and 18,392 answered the question regarding the frequency of dental flossing. Both self-rated oral health (teeth and gingivae) and frequency of dental flossing were collected from 2009 through 2018. Detailed characteristics of NHANES participants can be found in eTables 1 through 4 (available online at the end of the article).

WHS

The WHS was initially designed as a 10-year randomized clinical trial among 39,876 initially healthy female health care professionals 45 years or older at baseline (1992-1994) evaluating low-dose aspirin and vitamin E use for cancer and CVD prevention.^{19,20} After the trial ended in 2005, observational follow-up continued (mean, 27 years). Health and lifestyle data were collected at

ABBREVIATION KEY

BMI:	Body mass index.
CVD:	Cardiovascular disease.
NHANES:	National Health and Nutrition Examination Survey.
OHQ:	Oral health question.
PD:	Periodontal disease.
WHS:	Women's Health Study.

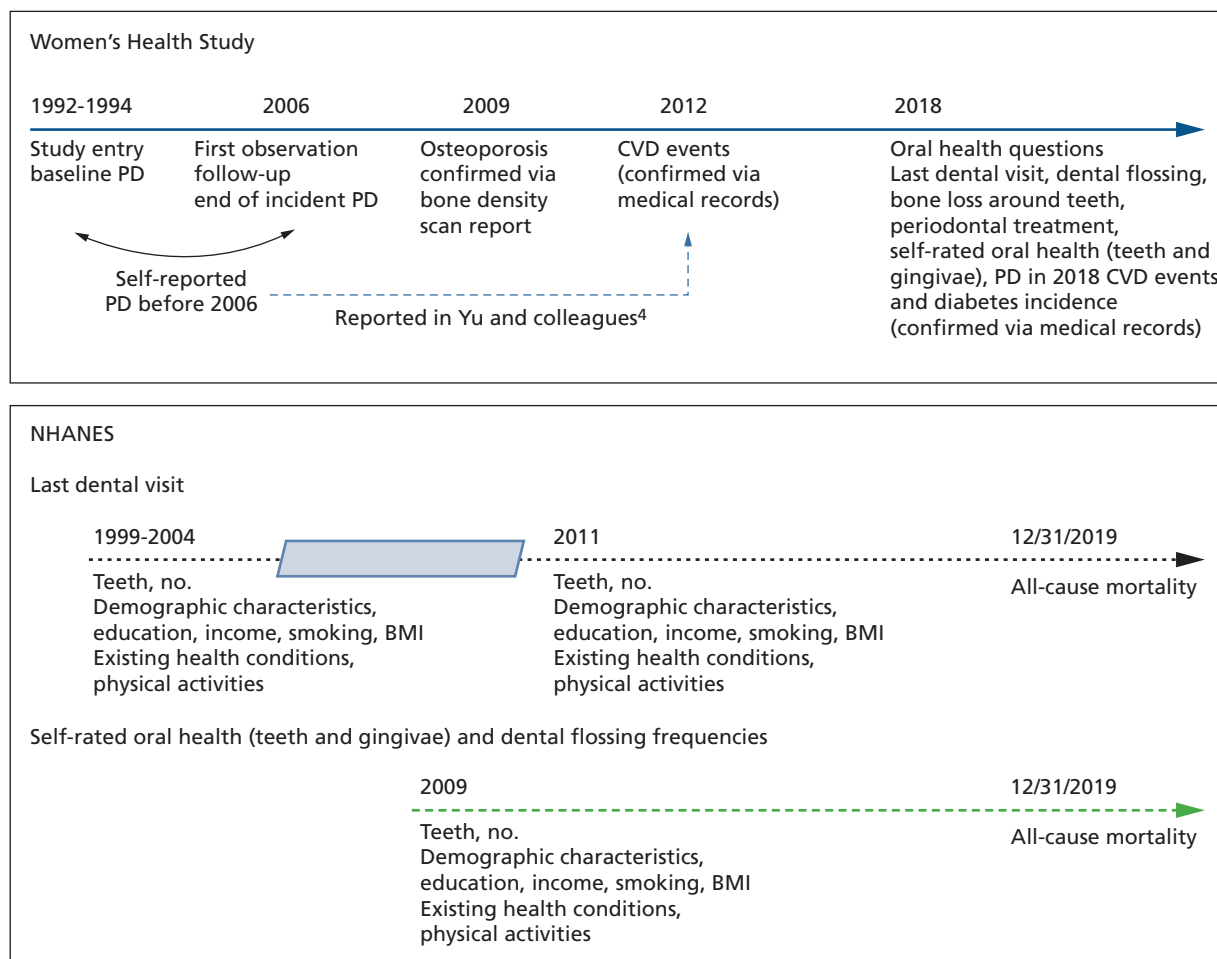


Figure 1. Flowchart of study timeline. BMI: Body mass index. CVD: Cardiovascular disease. PD: Periodontal disease.

baseline and annually via follow-up questionnaires. Written consent was obtained from all WHS participants, and the Brigham and Women's Hospital institutional review board approved the WHS study. Our report conforms to The Strengthening the Reporting of Observational Studies in Epidemiology guidelines.²⁴

NHANES

NHANES uses a stratified, multistage, cluster sampling design to gather representative health and nutrition data in the US population. Data were collected via home interviews and health or dental examinations conducted in mobile centers.²⁵ Data from 1999 onward are publicly available and are released biennially with survey and examination manuals. The National Center for Health Statistics Research Ethics Review Board approved NHANES, which conforms to The Strengthening the Reporting of Observational Studies in Epidemiology guidelines.²⁴ Among the 59,062 participants with mortality data (1999-2018), 29,554 had complete information on traditional risk factors, dental examination, and time since their last dental visits. For our investigation, 21,490 participants self-rated their teeth and gingival health, and 18,393 reported their dental flossing frequency. Detailed participant characteristics are available in eTables 1 through 4 (available online at the end of the article).

Self-reported PD and OHQs in the WHS

WHS participants were asked at study entry (1992-1994) whether they had ever received a diagnosis of any of several health outcomes, explicitly including PD.⁴ Newly diagnosed PD was also inquired at 36, 48, 60, 72, 84, 96, 108, and 120 months during the trial and in 2006.⁴ The question stems were "Since you started the trial (around 3 years ago)/In the past year, were you newly diagnosed with/have you had any of the following. . ."; PD was 1 possible response.¹⁶

In 2018, complementing the initial self-report of PD, additional oral health information was collected through these questions^{14,15}

1. “Do you think you might have gum disease? (yes/no/don’t know)”^{14,15}
2. “Overall, how would you rate the health of your teeth and gums? (excellent/very good/good/fair/poor/don’t know)”^{14,15}
3. “Have you ever had treatment for gum disease, such as scaling and root planing, sometimes called “deep cleaning”? (yes/no/don’t know)”^{14,15}
4. “Have you ever been told by a dental professional that you lost bone around your teeth? (yes/no/don’t know)”^{14,15}
5. “Aside from brushing your teeth with a toothbrush, in the LAST 7 DAYS, on how many DAYS did you use dental floss or any other device to clean between your teeth? (0/1/2/3/4/5/6/7)”^{14,15}
6. “In the past 12 months, have you visited a dentist or dental hygienist? (yes/no/don’t know)”²⁶
7. “How often do you usually visit the dental office for routine checkups or cleanings? (more than once per year/once per year/less than once per year/don’t know).”²⁶

The analyses presented are based on responses from 14,663 women who self-reported PD before 2006, the 2018 OHQs, and all other systemic conditions ascertained; consented to blood sampling at baseline; and were of European ancestry.

Covariates and Systemic Outcomes in the WHS

In the WHS, covariates encompassed age at the OHQ distribution, as well as education, cigarette smoking, BMI calculated as weight in kilograms divided by height in meters squared, history of hypercholesterolemia or hypertension, and physical activity, assessed from the WHS baseline questionnaire.²⁰ End points of incident myocardial infarction and stroke during annual follow-up questionnaires were confirmed by means of a physician or committee reviewing medical records.²⁰ Two composite cardiovascular end points were created: (1) major CVD, a composite of nonfatal myocardial infarction, nonfatal ischemic stroke, or death from CVD and (2) total CVD, defined as major CVD, bypass surgery, or percutaneous coronary angioplasty. Self-reported incident type 2 diabetes was ascertained via either telephone interview with a physician or a self-administered questionnaire inquiring about symptoms, diagnostic testing, and use of diabetes medication.^{20,27,28} A bone density scan confirmed the 2009 self-reported diagnosis of osteoporosis.²¹

Covariates, Existing Systemic Conditions, Mortality, and Number of Remaining Teeth in the NHANES

Age, sex, race and ethnicity, education levels, income to poverty ratios, physical activities, and cigarette smoking status were obtained from the self-reported NHANES.^{23,25,29} Physical activities were obtained from questionnaires during the home interview and categorized as sedentary (≥ 5 hours of sedentary activities per day), insufficient, moderate (≥ 150 minutes of moderate-intensity activities per week), or vigorous (≥ 75 minutes of vigorous-intensity aerobic activities or a combination of moderate- and vigorous-intensity aerobic activities per week) as the Physical Activity Guidelines for Americans suggested.²⁹ BMI was determined from the NHANES body measures examination. Mortality was ascertained via the National Center for Health Statistics through record matching using the National Death Index death certificates and converted for public use.^{23,30} Existing systemic comorbidities, such as total CVD (including congestive heart failure, coronary heart disease, angina, and heart attack) and stroke were summarized from the self-reported medical questionnaires.²⁵ Hypertension was defined via self-report, use of antihypertensive medications, or mean blood pressure greater than 140/90 millimeters of mercury. Diabetes mellitus was defined via self-report, presence of a fasting plasma glucose level greater than 140 mg/dL, plasma glucose level greater than 200 mg/dL, or the use of diabetic medications.²⁵ The NHANES tooth count was charted as primary, permanent, implant, and missing or residual roots, excluding third molars. We used the sum of permanent dentition (excluding residual roots) as the number of remaining natural teeth.²³

Statistical analysis

WHS

Group means and proportions were compared using *t* tests for continuous variables and χ^2 tests for categorical variables. Multivariate logistic regression was performed to examine associations

between 2018 OHQs and self-reported PD until 2006 and systemic outcomes. Model 1 adjusted for the following PD-related risk factors: age at OHQs, baseline education, and cigarette smoking.^{3,31} Model 2 included additional systemic outcome risk factors, such as BMI, physical activity, and history of hypertension and hypercholesterolemia. Reference groups for the designated analyses were women who responded yes to question 6 (“In the past 12 months, have you visited a dentist or dental hygienist?”) but answered no to question 1 (“Do you think you might have gum disease?”), question 3 (“Have you ever had treatment for gum disease, such as scaling and root planing, sometimes called ‘deep cleaning?’”), and question 4 (“Have you ever been told by a dental professional that you lost bone around your teeth?”). Responses to question 2 (“Overall, how would you rate the health of your teeth and gums?”) were grouped as binary, with excellent, very good, and good as the reference group compared with fair and poor. Similarly, women who flossed 2 or fewer times per week (question 5; 0, 1, 2) were compared with the reference group of flossing 3 or more times per week (3, 4, 5, 6, 7), and responses to dental examination or prophylaxis frequency (question 7) were grouped as less than once per year vs once or more (reference group) per year. For subgroup analyses of self-rated teeth and gingival health (question 2), each response was tested as an independent dummy variable with excellent as the reference group. Trend for self-rated teeth and gingiva health responses was tested using linear regression, treating levels of responses as an ordinal categorical variable.

NHANES

Group means and proportions were compared using *t* tests or analysis of variance for continuous variables and χ^2 tests for categorical variables. Cox proportional hazard regression survival analyses were used to assess risks of all-cause mortality accounting for multiple risk factors. Mortality risks were evaluated among those who had last seen a dentist more than 1 year ago compared with those who visited a dentist within 1 year (reference group), among those who self-rated their teeth and gingival health as worse (fair, poor) compared with those who reported excellent, very good, and good (reference group), and among those who flossed 2 or fewer times per week (0, 1, 2) compared with those who flossed 3 or more times per week (3, 4, 5, 6, 7). Covariates were adjusted for age, sex, race and ethnicity, and cigarette smoking, as in model 1. Model 2 also included education, income to poverty ratio, BMI, physical activities, and preexisting medical conditions (eg, hypertension, CVDs, diabetes, and stroke). Model 3 adjusted for all covariates in model 2 plus the number of remaining teeth. Additional details of subgroup survival analyses as specified are provided in eTables 5 through 7 (available online at the end of this article) and Figure 2.

All analyses were conducted using R statistical software (R Development Core Team) and statistical significance was set at $P < .05$.

RESULTS

Characteristics of WHS participants based on their self-reported PD until 2006

A total of 14,663 participants from the WHS were analyzed on the basis of their self-reported PD until 2006, their 2018 OHQs, and their systemic health outcomes (Table 1). Compared with those without PD, women with a PD diagnosis by 2006 were slightly older (mean age 77.87 vs 76.79 years; $P < .001$), more likely to be current cigarette smokers (14.8% vs 6.8%; $P < .001$), had an increased prevalence of hypercholesterolemia (28.5% vs 25.7%; $P = .002$), and lower levels of physical activity at baseline (rarely and never, 35.5% vs 33.9%; $P = .045$).

Regarding dental behaviors, no significant differences emerged in dental visit frequency, weekly flossing, or yearly dental prophylaxis between those with or without 2006 self-reported PD. A greater percentage of women reporting PD until 2006 rated their 2018 teeth and gingival health as fair or poor (19.9% vs 8.6%; $P < .001$). Similarly, women with 2006 self-reported PD were more likely to report bone loss around their teeth (47.4% vs 12.8%; $P < .001$), receiving a PD diagnosis (20.1% vs 3.8%; $P < .001$), and having undergone periodontal treatment (62.9% vs 12.3%; $P < .001$) in 2018. In terms of systemic health outcomes, women with 2006 self-reported PD exhibited a significantly higher likelihood of later reporting CVD events and osteoporosis (20.9% vs 17.4%; $P < .001$). However, there was no significant difference in the prevalence of diabetes between women with and without 2006 self-reported PD.

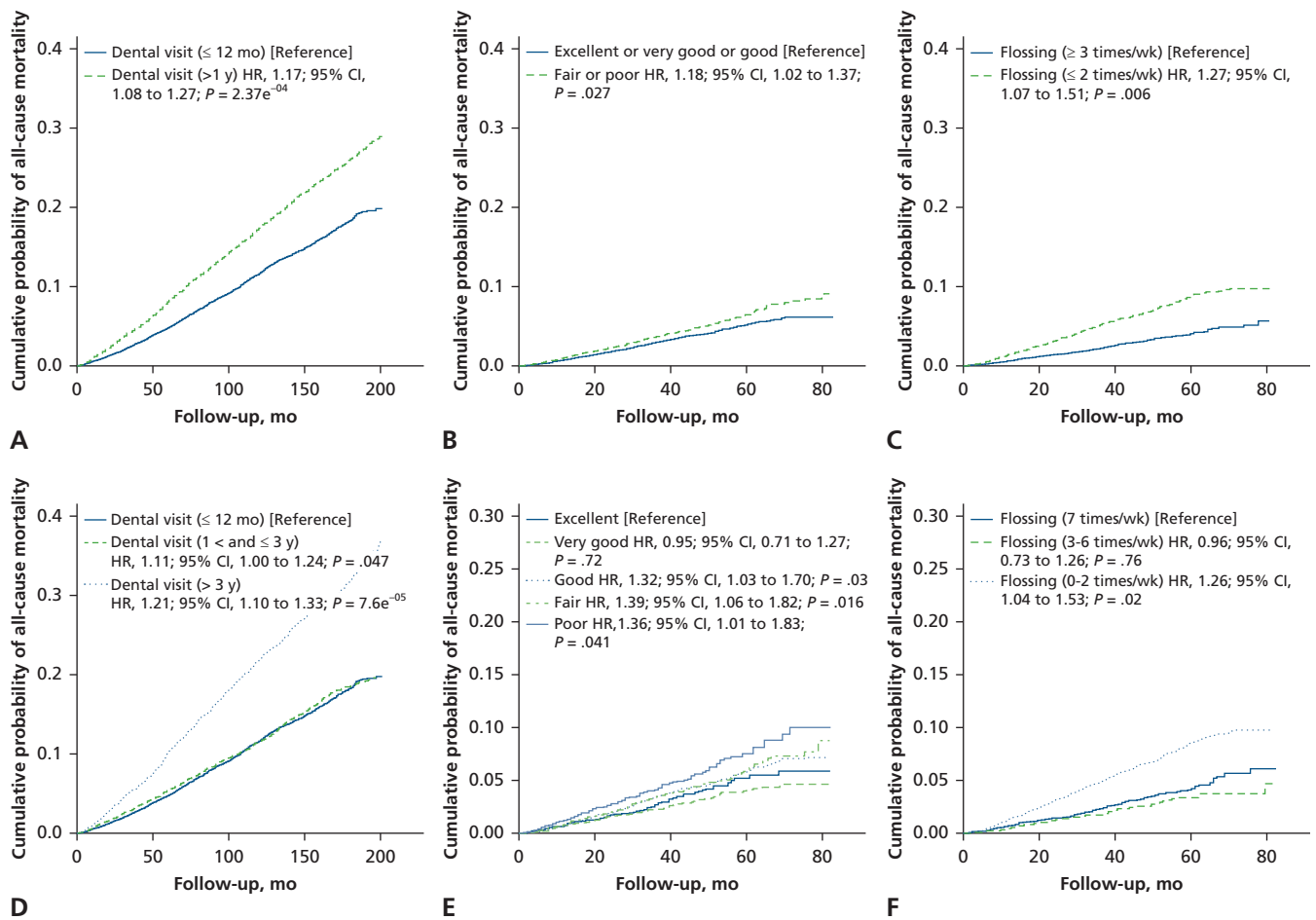


Figure 2. Kaplan-Meier survival curves according to last dental visit (A), self-rated oral health (teeth and gingivae) (B), and dental flossing frequency (C). Different survival curves were plotted for all-cause mortality on the basis of binary or multiple groups of responses for National Health and Nutrition Examination Survey participants' last dental visit (D), self-rated oral health (teeth and gingivae) (E), and dental flossing frequencies (F). Hazard ratio (HR) estimates and P values derived from the Cox proportional hazard regression survival analyses are provided in the upper left of each panel.

2018 OHQs and systemic health outcomes in the WHS

Associations between the 2018 OHQs and systemic conditions are outlined in Table 2. In model 1, adjustment accounted for the following established PD risk factors: age, education, and cigarette smoking.^{3,31} In model 2, we adjusted for additional recognized systemic outcome risk factors (that is, BMI, physical activity, and history of hypertension and hypercholesterolemia). Results in both models revealed significant associations with multiple systemic health outcomes, particularly among women who flossed 2 or fewer times per week or who rated their teeth and gingival health as fair or poor. Specifically, women with fair or poor self-rated teeth and gingival health were more likely to report a history of total CVD (odds ratio [OR], 1.39; 95% CI, 1.14 to 1.69; $P < .001$), major CVD (OR, 1.36; 95% CI, 1.05 to 1.74; $P = .018$), stroke (OR, 1.48; 95% CI, 1.06 to 2.01; $P = .017$), incident diabetes (OR, 1.21; 95% CI, 1.02 to 1.43; $P = .028$), and osteoporosis (OR, 1.60; 95% CI, 1.38 to 1.84; $P < .001$). All OHQ responses, except periodontal treatment, were significantly associated with osteoporosis. Lastly, women with infrequent oral health care behaviors (eg, flossing 2 or fewer times per week, no dental visit or prophylaxis within the past year) or those with fair or poor self-rated teeth and gingival health had higher odds of incident diabetes. It is also worth noting that, comparable with self-reported PD until 2006, participants who self-rated their teeth and gingival health as fair or poor in 2018 exhibited similar effect sizes for associations with total and major CVD, slightly higher for stroke, diabetes, and osteoporosis.

Detailed total CVD output (model 2) is provide in eTable 8 (available online at the end of the article).

Table 1. Characteristics of Women’s Health Study participants who responded to the 2018 oral health questions, according to their self-reported periodontal disease status until 2006.

CHARACTERISTIC	Total	SELF-REPORTED EVER HAVING PERIODONTAL DISEASE UNTIL 2006		
		No	Yes	P Value*
Participants, No. (%)	14,663	11,260 (77)	3,403 (23)	Not applicable
Age at Oral Health Questions, Y, Mean (SD)	77.0 (5.6)	76.79 (5.5)	77.87 (5.8)	< .001
Baseline Information at the Beginning of the Clinical Trial				
Education, no. (%)				
< Bachelor’s degree	7,609 (51.9)	5,890 (52.3)	1,719 (50.5)	.072
≥ Bachelor’s degree	7,054 (48.1)	5,370 (47.7)	1,684 (49.5)	
Cigarette smoking, no. (%)				
Current	1,269 (9)	764 (6.8)	505 (14.8)	< .001
Past	5,510 (38)	4,049 (36.0)	1,461 (43.0)	
Never	7,976 (54)	6,441 (57.2)	1,435 (42.2)	
Body mass index, † mean (SD)	25.6 (4.7)	25.55 (4.7)	25.74 (4.7)	.049
Hypertension, no. (%)	2,873 (20)	2,173 (19.3)	700 (20.6)	.11
Hypercholesterolemia, no. (%)	3,859 (26)	2,891 (25.7)	968 (28.5)	.002
Physical activity, no. (%)				
Rarely or never	5,019 (34)	3,813 (33.9)	1,206 (35.5)	.045
< 1 time/wk	2,930 (20)	2,224 (19.8)	706 (20.8)	
1-3 times/wk	4,930 (34)	3,820 (33.9)	1,110 (32.6)	
≥ 4 times/wk	1,779 (12)	1,400 (12.4)	379 (11.1)	
Responses to Oral Health Questions in 2018, No. (%)				
Last dental visit > 1 y ago	1,501 (10)	1,143 (10.2)	358 (10.6)	.53
Self-rated oral health (fair, poor)	1,615 (11)	954 (8.6)	661 (19.9)	< .001
Floss ≤ 2 times/wk	2,671 (18)	2,065 (18.5)	606 (18.0)	.5
Bone loss around teeth	2,884 (20)	1,382 (12.8)	1,502 (47.4)	< .001
Prophylaxis < 1/y	1,314 (9)	987 (8.9)	327 (9.8)	.13
Had periodontal treatment	3,426 (23)	1,361 (12.3)	2,065 (62.9)	< .001
Periodontal disease in 2018	1,072 (7.3)	418 (3.8)	654 (20.1)	< .001
Systemic Health Outcomes Across the Observational Study Period, No. (%)				
Total cardiovascular disease (2018)	845 (6)	593 (5.3)	252 (7.4)	< .001
Major cardiovascular disease (2018)	474 (3)	325 (2.9)	149 (4.4)	< .001
Myocardial infarction (2018)	235 (2)	156 (1.4)	79 (2.3)	< .001
Stroke (2018)	286 (2)	206 (1.8)	80 (2.4)	.06
Diabetes (2017)	1,392 (9)	1,054 (9.4)	338 (9.9)	.34
Osteoporosis (2009)	2,266 (15)	1,665 (17.4)	601 (20.9)	< .001

* P values are from χ^2 test for categorical variables or t test for continuous variables comparing groups. † Calculated as weight in kilograms divided by height in meters squared.

Ordinal self-rated oral health responses and systemic health outcomes

Associations between different self-rated teeth and gingival health levels and systemic health outcomes are detailed in Table 3. Deteriorating oral health ratings (from excellent to poor) corresponded to elevated odds of experiencing various systemic comorbidities. For instance, odds of total CVD events increased from excellent (reference group) to very good (OR, 1.04; 95% CI, 0.83 to 1.31; $P = .72$), good (OR, 1.27; 95% CI, 1.02 to 1.59; $P = .037$) fair (OR, 1.51; 95% CI, 1.15 to 1.98; $P = .003$), and poor (OR, 1.92; 95% CI, 1.22 to 2.94; $P = .003$). The increasing trends of ORs

Table 2. Associations of Women’s Health Study 2018 oral health questions with systemic health outcomes.

VARIABLE	PERIODONTAL DISEASE IN 2006	FLOSS ≤ 2 TIMES/WK	LAST DENTAL VISIT > 1 Y AGO	PROPHYLAXIS < 1 TIME/Y	BONE LOSS AROUND TEETH	SELF-RATED ORAL HEALTH* (BINARY)	PERIODONTAL TREATMENT	PERIODONTAL DISEASE IN 2018
Model 1, † OR (95% CI)								
Total CVD [‡]	1.26 (1.08 to 1.47) [§]	1.35 (1.14 to 1.59) [¶]	1.28 (1.04 to 1.56) [#]	1.33 (1.07 to 1.64) [§]	0.98 (0.82 to 1.17)	1.54 (1.27 to 1.86) [¶]	1.03 (0.87 to 1.22)	1.02 (0.77 to 1.33)
Major CVD	1.34 (1.09 to 1.64) [§]	1.32 (1.06 to 1.63) [#]	1.06 (0.8 to 1.39)	1.23 (0.92 to 1.62)	0.88 (0.69 to 1.12)	1.47 (1.14 to 1.87) [§]	1.03 (0.82 to 1.28)	1.08 (0.75 to 1.51)
Myocardial infarction	1.42 (1.07 to 1.87) [#]	1 (0.71 to 1.37)	1.58 (1.1 to 2.21) [§]	1.67 (1.15 to 2.36) [§]	1.06 (0.76 to 1.45)	1.31 (0.9 to 1.84)	1.13 (0.83 to 1.52)	1.17 (0.71 to 1.82)
Stroke	1.16 (0.89 to 1.51)	1.53 (1.16 to 1.99) [§]	0.71 (0.46 to 1.05)	0.8 (0.51 to 1.19)	0.75 (0.53 to 1.04)	1.55 (1.13 to 2.1) [§]	0.93 (0.69 to 1.24)	1.07 (0.66 to 1.64)
Incident diabetes	1.06 (0.93 to 1.2)	1.82 (1.6 to 2.07) [¶]	1.76 (1.5 to 2.05) [¶]	1.77 (1.5 to 2.09) [¶]	0.92 (0.8 to 1.06)	1.64 (1.4 to 1.91) [¶]	0.89 (0.78 to 1.02)	1.12 (0.9 to 1.37)
Osteoporosis (2009)	1.17 (1.05 to 1.3) [§]	1.12 (0.99 to 1.26)	1.22 (1.05 to 1.42) [#]	1.14 (0.97 to 1.34)	1.36 (1.21 to 1.52) [¶]	1.46 (1.27 to 1.68) [¶]	1.04 (0.93 to 1.16)	1.36 (1.15 to 1.61) [¶]
Model 2, ‡ OR (95% CI)								
Total CVD	1.27 (1.08 to 1.49) [§]	1.23 (1.03 to 1.46) [#]	1.1 (0.89 to 1.35)	1.18 (0.94 to 1.47)	1.02 (0.84 to 1.22)	1.39 (1.14 to 1.69) [¶]	1.04 (0.88 to 1.24)	1 (0.75 to 1.31)
Major CVD	1.31 (1.07 to 1.61) [§]	1.21 (0.96 to 1.5)	0.96 (0.71 to 1.26)	1.14 (0.85 to 1.51)	0.91 (0.71 to 1.16)	1.36 (1.05 to 1.74) [#]	1.03 (0.82 to 1.28)	1.06 (0.73 to 1.49)
Myocardial infarction	1.42 (1.07 to 1.88) [#]	0.87 (0.62 to 1.21)	1.41 (0.97 to 1.99)	1.54 (1.05 to 2.2) [#]	1.09 (0.78 to 1.5)	1.17 (0.8 to 1.67)	1.11 (0.81 to 1.5)	1.18 (0.72 to 1.85)
Stroke	1.12 (0.85 to 1.46)	1.45 (1.1 to 1.91) [§]	0.61 (0.38 to 0.92) [#]	0.69 (0.43 to 1.05)	0.76 (0.54 to 1.05)	1.48 (1.06 to 2.01) [#]	0.96 (0.71 to 1.28)	1.04 (0.63 to 1.61)
Incident diabetes	1 (0.86 to 1.15)	1.46 (1.27 to 1.68) [¶]	1.23 (1.03 to 1.46) [#]	1.33 (1.11 to 1.6) [§]	0.96 (0.82 to 1.12)	1.21 (1.02 to 1.43) [#]	0.85 (0.73 to 0.99) [#]	1.04 (0.82 to 1.29)
Osteoporosis (2009)	1.2 (1.07 to 1.33) [§]	1.2 (1.06 to 1.35) [§]	1.34 (1.14 to 1.57) [¶]	1.24 (1.05 to 1.47) [#]	1.32 (1.17 to 1.47) [¶]	1.6 (1.38 to 1.84) [¶]	1.03 (0.92 to 1.15)	1.38 (1.16 to 1.63) [¶]

* Self-rated oral health (teeth and gingivae), with binary grouping of levels of responses as excellent, very good, and good [Reference] vs fair and poor. † Models: The associations of individual oral health questions with systemic health outcomes were assessed by means of multivariate logistic regression adjusting for (model 1) age at the time of oral health questions, baseline information on educational and smoking, and in model 2, variables in model 1 plus body mass index (calculated as weight in kilograms divided by height in meters squared), physical activities, and history of hypertension and hypercholesterolemia. ‡ CVD: Cardiovascular disease. § $P < .01$. ¶ $P < .001$. # $P < .05$.

associated with total CVD, diabetes, and osteoporosis across self-reported oral health responses were significant in both models 1 and 2 ($P < .001$).

All-cause mortality risks among NHANES participants

Having identified significant associations between self-reported oral health and systemic health outcomes in the WHS, we conducted an independent analysis using the NHANES data to examine whether OHQs exhibit similar associations with mortality (Table 4). Detailed NHANES participant characteristics are provided in eTables 1 through 4. The risks of all-cause mortality were estimated on the basis of the NHANES participants’ OHQ responses. Participants who reported no dental visit within the past year had higher all-cause mortality risks than those who visited a dentist within the past year (hazard ratio [HR], 1.17; 95% CI, 1.07 to 1.27; $P < .001$). Participants self-rating teeth and gingival health as fair or poor also had elevated risks of all-cause mortality compared with those rating it as excellent, very good, and good (HR, 1.18; 95% CI, 1.02 to 1.37; $P = .027$). Furthermore, participants flossing 2 or fewer times per week exhibited higher mortality risks than those flossing 3 or more times per week (HR, 1.27; 95% CI, 1.07 to 1.51; $P = .006$). Survival curves are displayed in Figure 2 and detailed estimates from these analyses are provided in eTables 5 through 7. The results of subgroup analyses, further dividing dental visit, flossing frequency, and self-rated oral health into 3 or more groups, consistently showed increasing mortality risks compared with the reference group.

Table 3. Associations with systemic health outcomes according to levels of responses to the Women’s Health Study question: “Overall, how would you rate the health of your teeth and gums? (excellent/very good/good/fair/poor/don’t know).”

VARIABLE	SELF-RATED ORAL HEALTH OF TEETH AND GINGIVAE					P VALUE FOR TREND
	Excellent	Very Good	Good	Fair	Poor	
Participants. No. (%)	2,651 (18)	5,683 (39)	4,512 (31)	1,376 (10)	239 (2)	Not applicable
Model 1,* Odds Ratio (95% CI)						
Total CVD [†]	[Reference]	1.04 (0.83 to 1.31)	1.38 (1.11 to 1.72) [‡]	1.71 (1.31 to 2.22) [§]	2.26 (1.44 to 3.44) [§]	< .001
Major CVD	[Reference]	0.97 (0.73 to 1.3)	1.37 (1.04 to 1.83) [¶]	1.63 (1.16 to 2.3) [‡]	1.84 (0.99 to 3.21)	< .001
Myocardial infarction	[Reference]	0.89 (0.6 to 1.33)	1.28 (0.88 to 1.91)	1.22 (0.74 to 2.0)	2.23 (1.03 to 4.42) [¶]	.006
Stroke	[Reference]	1.16 (0.8 to 1.71)	1.36 (0.94 to 2.0)	2.06 (1.34 to 3.19) [‡]	1.11 (0.38 to 2.62)	.008
Incident diabetes	[Reference]	1.14 (0.95 to 1.36)	1.79 (1.51 to 2.14) [§]	2.02 (1.63 to 2.51) [§]	3.1 (2.16 to 4.39) [‡]	< .001
Osteoporosis (2009)	[Reference]	0.98 (0.85 to 1.11)	1.17 (1.02 to 1.34) [¶]	1.49 (1.24 to 1.78) [§]	1.85 (1.30 to 2.61) [§]	< .001
Model 2,* Odds Ratio (95% CI)						
Total CVD	[Reference]	1.04 (0.83 to 1.31)	1.27 (1.02 to 1.59) [¶]	1.51 (1.15 to 1.98) [‡]	1.92 (1.22 to 2.94) [‡]	< .001
Major CVD	[Reference]	0.97 (0.73 to 1.3)	1.28 (0.96 to 1.71)	1.47 (1.04 to 2.09) [¶]	1.65 (0.89 to 2.89)	.001
Myocardial infarction	[Reference]	0.91 (0.61 to 1.37)	1.18 (0.8 to 1.77)	1.06 (0.63 to 1.75)	1.96 (0.9 to 3.92)	.05
Stroke	[Reference]	1.16 (0.8 to 1.71)	1.33 (0.92 to 1.96)	1.95 (1.26 to 3.04) [‡]	1.06 (0.36 to 2.51)	.02
Incident diabetes	[Reference]	1.11 (0.92 to 1.34)	1.48 (1.23 to 1.78) [§]	1.45 (1.15 to 1.83) [‡]	1.69 (1.13 to 2.5) [‡]	< .001
Osteoporosis (2009)	[Reference]	0.99 (0.87 to 1.13)	1.26 (1.1 to 1.45) [§]	1.66 (1.38 to 1.99) [§]	2.3 (1.6 to 3.28) [§]	< .001

* The associations of each response of self-reported oral health as an indicator variable and the trend for levels of responses as an ordinal categorical variable to systemic outcomes were assessed using multivariate logistic regression adjusting for (model 1) age at the time of self-rated oral health responses, baseline information about education and cigarette smoking (3 groups), and in model 2 with body mass index (calculated as weight in kilograms divided by height in meters squared), physical activities, and history of hypertension and hypercholesterolemia. † CVD: Cardiovascular disease. ‡ $P < .01$. § $P < .001$. ¶ $P < .05$.

Table 4. Risk of all-cause mortality in the National Health and Nutrition Examination Survey based on last dental visit, self-rated oral health (teeth and gingivae), or frequency of dental flossing.*

ALL-CAUSE MORTALITY	MODEL 1	MODEL 2	MODEL 3
Participants, No. (Events, No.)	29,510 (2,937)	29,510 (2,937)	29,510 (2,937)
Last Dental Visit, HR[†] (95% CI), [Reference, ≤ 1 y]			
> 1 y	1.52 (1.41 to 1.64) [‡]	1.26 (1.16 to 1.36) [‡]	1.17 (1.08 to 1.27) [‡]
Participants, No. (Events, No.)	21,488 (791)	21,488 (791)	21,488 (791)
Self-Rated Oral Health,[§] HR (95% CI), [Reference, Excellent or Good]			
Fair or poor	1.39 (1.20 to 1.61) [‡]	1.18 (1.02 to 1.38) [¶]	1.18 (1.02 to 1.37) [¶]
Participants, No. (Events, No.)	18,392 (775)	18,392 (775)	18,392 (775)
Flossing Frequency, HR (95% CI), [Reference, ≥ 3 times/wk]			
≤ 2 times/wk	1.74 (1.49 to 2.03) [‡]	1.46 (1.25 to 1.71) [‡]	1.27 (1.07 to 1.51) [#]

* Cox proportional hazard regression survival analyses were adjusted for the following covariates: model 1: age, sex, race and ethnicity (4 groups) and smoking (3 groups); model 2: covariates in model 1, education (3 groups), income to poverty ratio, body mass index (calculated as weight in kilograms divided by height in meters squared), physical activities (4 groups), and preexisting medical conditions of hypertension, total cardiovascular diseases, diabetes, and stroke; model 3: covariates in model 2 and the total number of remaining teeth. † HR: Hazard ratio. ‡ $P < .001$. § Self-rated oral health (teeth and gingivae). ¶ $P < .05$. # $P < .01$.

In summary, our investigations, spanning 2 independent large studies, underscored robust connections among self-reported oral health, systemic health outcomes, and heightened risks of all-cause mortality.

DISCUSSION

The link between poor oral health and PD and heightened mortality and frailty is well-documented.³²⁻³⁴ In alignment with prior findings,^{4,9} our analysis of self-reported OHQs from WHS participants reinforced robust associations with systemic health outcomes. Similarly, NHANES participants with infrequent dental visits, limited flossing, or self-rated fair or poor oral health faced elevated risks of all-cause mortality, independent of their remaining teeth count. Therefore, our results emphasized the importance of self-reported OHQs in delineating oral health's connection with systemic health outcomes across large-scale studies. In addition, to our knowledge, our findings of infrequent dental flossing among WHS participants significantly linking to higher odds of stroke, diabetes, and osteoporosis had not yet been reported.

Existing evidence indicates that oral health behaviors, such as frequency of toothbrushing, are linked to cardiovascular events,³⁵ as well as to changes in markers like C-reactive protein,^{36,37} fibrinogen,³⁶ and vascular function.³⁷ Researchers using a composite score based on self-reported oral health identified heightened incident hypertension risks tied to poor oral health conditions.³⁸ Our results based on OHQ responses are consistent with those of previous researchers who established the epidemiologic associations of PD or tooth loss with CVD,^{4,39} diabetes,⁶⁻⁸ and osteoporosis.^{9,40,41} Combining our results with prior evidence,³⁵⁻³⁷ toothbrushing and dental flossing warrant further exploration as preventive interventions for systemic health outcomes.

Our data elucidated that WHS participants reporting PD until 2006 were more likely to self-assess their teeth and gingival health as fair or poor, report undergoing periodontal treatment or bone loss around their teeth, or consider themselves as still having PD in 2018. These findings reveal strong correlations between the responses across 2 distinct time points.

Our study has several limitations. There are no clinical data related to the WHS self-reported OHQs, except a limited subset of women with retrieved dental records. Among those 63 women, fewer teeth were noted among those with worse oral health conditions (previously reported).⁴² In addition, the cross-sectional nature of the presented WHS analyses and different timing of PD and OHQ information limit causal interpretation, necessitating further research for additional exploration and validation.

To reinforce the associations between self-reported OHQs and systemic health outcomes, we independently conducted survival analyses for all-cause mortality in the NHANES. This was separate from the WHS observations but similarly relied on self-reported oral health and systemic disease data based on a representative population. Results indicated higher risks of all-cause mortality for participants without dental visits within the past year, those self-rating teeth and gingival health as fair or poor, or participants flossing 2 or fewer times per week. Hence, the WHS- and NHANES-derived results together underscore the oral-systemic connection and expand the rationale for using self-reported OHQs in population studies.

CONCLUSIONS

Our study elucidated the value of self-reported oral health indicators, especially time since last dental visit, self-assessed teeth and gingival health, and dental flossing frequency. These metrics are invaluable for assessing oral health in extensive studies or data-rich databases in which thorough clinical examinations or dental records might be lacking. Moreover, our investigations, spanning 2 independent large studies, underscored the significant relationship between self-reported oral health and systemic health outcomes and heightened risks of all-cause mortality. The significant oral-systemic correlations we have identified not only reinforced the well-established links between PD and systemic comorbidities,^{4,9,43} as reported previously, but also highlight the need for future investigations. Furthermore, our finding of increased all-cause mortality among those having sub-optimal dental visits emphasized the urgency of addressing barriers to accessing oral health care. ■

DISCLOSURE

None of the authors reported any disclosures.

SUPPLEMENTAL DATA

Supplemental data related to this article can be found at: <http://doi.org/10.1016/j.adaj.2023.11.006>.

Dr. Yu is an associate professor, Department of Periodontology, Tufts University School of Dental Medicine, Boston, MA. Address correspondence to Dr. Yu, Department of Periodontology, Tufts University School of Dental Medicine, 1 Kneeland St, Boston MA 02111, email Yau-Hua.Yu@tufts.edu.

Dr. Steffensen is a professor emeritus, Department of Periodontology, Tufts University School of Dental Medicine, Boston, MA.

Dr. Chasman is an associate professor of medicine, Harvard Medical School, Boston, MA, and an associate geneticist, Division of Preventive Medicine, Brigham and Women's Hospital, Boston, MA.

Dr. Buring is a professor of medicine, Harvard Medical School, Boston, MA, and a professor, Department of Epidemiology, Harvard T.H. Chan School of Public Health, Harvard University, Boston, MA.

This research was supported by grants HL043851, HL080467, HL099355 from the National Heart, Lung, and Blood Institute, National Institutes of Health, and grants CA047988 and CA182913 from the National Cancer Institute, National Institutes of Health, to The Women's Health Study and grant K23DE026804 from the National Institute of Dental and Craniofacial Research, National Institutes of Health, and the National Institutes of Health Loan Repayment Programs to Dr. Yu.

ORCID Numbers. Yau-Hua Yu: <https://orcid.org/0000-0002-4723-5064>; Bjorn Steffensen: <https://orcid.org/0000-0003-0165-4252>; Daniel I. Chasman: <https://orcid.org/0000-0003-3357-0862>; Julie E. Buring: <https://orcid.org/0000-0003-2648-8692>. For information regarding ORCID numbers, go to <http://orcid.org>.

1. Eke PI, Thornton-Evans GO, Wei L, Borgnakke WS, Dye BA, Genco RJ. Periodontitis in US adults: National Health and Nutrition Examination Survey 2009-2014. *JADA*. 2018;149(7):576-588.e6.
2. Eke PI, Borgnakke WS, Genco RJ. Recent epidemiologic trends in periodontitis in the USA. *Periodontol* 2000. 2020;82(1):257-267.
3. Meyle J, Chapple I. Molecular aspects of the pathogenesis of periodontitis. *Periodontol* 2000. 2015;69(1):7-17.
4. Yu YH, Chasman DI, Buring JE, Rose L, Ridker PM. Cardiovascular risks associated with incident and prevalent periodontal disease. *J Clin Periodontol*. 2015;42(1):21-28.
5. Tonetti MS, Van Dyke TE, on behalf of the working group 1 of the joint EFPAAAP workshop. Periodontitis and atherosclerotic cardiovascular disease: consensus report of the Joint EFP/AAP Workshop on Periodontitis and Systemic Diseases. *J Periodontol*. 2013;84(4 suppl):S24-S29.
6. Genco RJ, Borgnakke WS. Diabetes as a potential risk for periodontitis: association studies. *Periodontol* 2000. 2020;83(1):40-45.
7. Demmer RT, Holtfreter B, Desvarieux M, et al. The influence of type 1 and type 2 diabetes on periodontal disease progression: prospective results from the Study of Health in Pomerania (SHIP). *Diabetes Care*. 2012;35(10):2036-2042.
8. Chapple IL, Genco R, on behalf of working group 2 of the joint EFPAAAP workshop. Diabetes and periodontal diseases: consensus report of the Joint EFP/AAP Workshop on Periodontitis and Systemic Diseases. *J Periodontol*. 2013;84(4 suppl):S106-S112.
9. Penoni DC, Fidalgo TK, Torres SR, et al. Bone density and clinical periodontal attachment in post-menopausal women: a systematic review and meta-analysis. *J Dent Res*. 2017;96(3):261-269.
10. Josphipura KJ, Rimm EB, Douglass CW, Trichopoulos D, Ascherio A, Willett WC. Poor oral health and coronary heart disease. *J Dent Res*. 1996;75(9):1631-1636.
11. Momen-Heravi F, Babic A, Tworoger SS, et al. Periodontal disease, tooth loss and colorectal cancer risk: results from the Nurses' Health Study. *Int J Cancer*. 2017;140(3):646-652.
12. Josphipura KJ, Hung HC, Rimm EB, Willett WC, Ascherio A. Periodontal disease, tooth loss, and incidence of ischemic stroke. *Stroke*. 2003;34(1):47-52.
13. Hung HC, Willett W, Merchant A, Rosner BA, Ascherio A, Josphipura KJ. Oral health and peripheral arterial disease. *Circulation*. 2003;107(8):1152-1157.
14. Eke PI, Genco RJ. CDC Periodontal Disease Surveillance Project: background, objectives, and progress report. *J Periodontol*. 2007;78(7 suppl):1366-1371.
15. Eke PI, Dye BA, Wei L, et al. Self-reported measures for surveillance of periodontitis. *J Dent Res*. 2013;92(11):1041-1047.
16. Shungin D, Haworth S, Divaris K, et al. Genome-wide analysis of dental caries and periodontitis combining clinical and self-reported data. *Nat Commun*. 2019;10(1):2773.
17. Gaziano JM, Concato J, Brophy M, et al. Million Veteran Program: a mega-biobank to study genetic influences on health and disease. *J Clin Epidemiol*. 2016;70:214-223.
18. *Oral Health in America. Advances and Challenges: A Report from the National Institutes of Health*. National Institutes of Health; 2021.
19. Ridker PM, Chasman DI, Zee RY, et al; Women's Genome Health Study Working Group. Rationale, design, and methodology of the Women's Genome Health Study: a genome-wide association study of more than 25,000 initially healthy American women. *Clin Chem*. 2008;54(2):249-255.
20. Ridker PM, Cook NR, Lee IM, et al. A randomized trial of low-dose aspirin in the primary prevention of cardiovascular disease in women. *N Engl J Med*. 2005;352(13):1293-1304.
21. Estrada K, Styrkarsdottir U, Evangelou E, et al. Genome-wide meta-analysis identifies 56 bone mineral density loci and reveals 14 loci associated with risk of fracture. *Nat Genet*. 2012;44(5):491-501.
22. Yu YH, Doucette-Stamm L, Rogus J, et al. Family history of MI, smoking, and risk of periodontal disease. *J Dent Res*. 2018;97(10):1106-1113.
23. Yu YH, Cheung WS, Steffensen B, Miller DR. Number of teeth is associated with all-cause and disease-specific mortality. *BMC Oral Health*. 2021;21(1):568.
24. von Elm E, Altman DG, Egger M, et al; STROBE Initiative. The Strengthening the Reporting of Observational Studies in Epidemiology (STROBE) statement: guidelines for reporting observational studies. *Lancet*. 2007;370(9596):1453-1457.
25. Dye BA, Thornton-Evans G. A brief history of national surveillance efforts for periodontal disease in the United States. *J Periodontol*. 2007;78(7 suppl):1373-1379.
26. Del Pinto R, Monaco A, Ortu E, et al. Access to dental care and blood pressure profiles in adults with high socioeconomic status. *J Periodontol*. 2022;93(7):1060-1071.
27. Pradhan AD, Cook NR, Manson JE, Ridker PM, Buring JE. A randomized trial of low-dose aspirin in the prevention of clinical type 2 diabetes in women. *Diabetes Care*. 2009;32(1):3-8.
28. Song Y, Manson JE, Buring JE, Liu S. A prospective study of red meat consumption and type 2 diabetes in middle-aged and elderly women: the women's health study. *Diabetes Care*. 2004;27(9):2108-2115.
29. Piercy KL, Troiano RP, Ballard RM, et al. The Physical Activity Guidelines for Americans. *JAMA*. 2018;320(19):2020-2028.
30. NCHS Public-use Linked Mortality Files. National Center for Health Statistics. Accessed November 25, 2023. <https://www.cdc.gov/nchs/data-linkage/mortality-public.htm>
31. Tomar SL, Asma S. Smoking-attributable periodontitis in the United States: findings from NHANES III. National Health and Nutrition Examination Survey. *J Periodontol*. 2000;71(5):743-751.
32. Tanaka T, Takahashi K, Hirano H, et al. Oral frailty as a risk factor for physical frailty and mortality in community-dwelling elderly. *J Gerontol A Biol Sci Med Sci*. 2018;73(12):1661-1667.
33. Gupta A, Felton DA, Jemt T, Koka S. Rehabilitation of edentulism and mortality: a systematic review. *J Prosthodont*. 2019;28(5):526-535.
34. Sabbah W, Slade GD, Sanders AE, Bernabe E. Denture wearing and mortality risk in edentulous American adults: a propensity score analysis. *J Dent*. 2020;100:103360.
35. Janket SJ, Lee C, Surakka M, et al. Oral hygiene, mouthwash usage and cardiovascular mortality during 18.8 years of follow-up [published online ahead of print February 3, 2023]. *Br Dent J*. <https://doi.org/10.1038/s41415-023-5507-4>
36. de Oliveira C, Watt R, Hamer M. Toothbrushing, inflammation, and risk of cardiovascular disease: results from Scottish Health Survey. *BMJ*. 2010;340:c2451. <https://doi.org/10.1136/bmj.c2451>
37. Matsui S, Maruhashi T, Kishimoto S, et al. Poor tooth brushing behavior is associated with high risk of cardiovascular events: a prospective observational study. *Int J Cardiol*. 2022;350:111-117.
38. Carra MC, Fessi S, Detzen L, et al. Self-reported periodontal health and incident hypertension: longitudinal evidence from the NutriNet-Sante e-cohort. *J Hypertens*. 2021;39(12):2422-2430.
39. Lee HJ, Choi EK, Park JB, Han KD, Oh S. Tooth loss predicts myocardial infarction, heart failure, stroke, and death. *J Dent Res*. 2019;98(2):164-170.
40. Wakai K, Naito M, Naito T, et al. Tooth loss and risk of hip fracture: a prospective study of male Japanese dentists. *Community Dent Oral Epidemiol*. 2013;41(1):48-54.
41. Yu YH, Cheung WS, Miller DR, Steffensen B. Number of teeth is associated with hip fracture and femoral neck bone mineral density in the NHANES. *Arch Osteoporos*. 2021;16(1):105.
42. Yu YH, Steffensen B, Ridker PM, Buring JE, Chasman DI. Candidate loci shared among periodontal disease, diabetes and bone density. *Front Endocrinol (Lausanne)*. 2022;13:1016373.
43. Lamster IB, Lalla E, Borgnakke WS, Taylor GW. The relationship between oral health and diabetes mellitus. *JADA*. 2008;139(suppl):19S-24S.

eTable 1. Characteristics of excluded National Health and Nutrition Examination Survey participants due to missing values.*

CHARACTERISTIC	TOTAL MORTALITY ELIGIBLE DATA	WITHOUT MISSING DENTAL VISIT	WITHOUT MISSING SELF-RATED ORAL HEALTH [†]	WITHOUT MISSING FLOSSING
Participants, No.	59,062	29,510	21,488	18,392
Age, Y, Mean (SD)	47.74 (19.5)	49.09 (18.1)	49.72 (17.2)	53.98 (14.8)
Male, No. (%)	28,485 (48.2)	14,270 (48.4)	10,508 (48.9)	9,000 (48.9)
Race and Ethnicity, No. (%)				
White	25,383 (43.0)	12,922 (43.8)	8,754 (40.7)	7,712 (41.9)
Black	12,625 (21.4)	6,198 (21.0)	4,685 (21.8)	3,959 (21.5)
Hispanic	15,588 (26.4)	7,104 (24.1)	4,988 (23.2)	4,239 (23.0)
Other	5,466 (9.3)	3,286 (11.1)	3,062 (14.2)	2,482 (13.5)
Total Mortality, No. (%)	6,735 (11.4)	2,937 (10.0)	791 (3.7)	775 (4.2)
Maximum Follow-Up, Mo, Mean (SD)	85.11 (54.6)	80.52 (62.6)	41.57 (18.7)	42.34 (19.3)
Cause of Death, No. (%)				
Diseases of heart	1,212 (2.1)	526 (1.8)	151 (0.7)	153 (0.8)
Malignant neoplasms	1,433 (2.4)	672 (2.3)	204 (1.0)	203 (1.1)
Accidents	195 (0.33)	98 (0.3)	0	0
Cerebral vascular diseases	261 (0.44)	122 (0.4)	0	0
Diabetes multiple causes of death	760 (1.3)	343 (1.2)	91 (0.4)	91 (0.5)
With Dental Examinations, No. (%)	50,764 (86)	29,510 (100)	21,488 (100)	18,392 (100)
Dental				
No. of teeth, mean (SD)	21.87 (8.7)	21.73 (8.6)	22.02 (8.3)	21.15 (8.6)
No. of anterior teeth, mean (SD)	10.15 (3.7)	10.14 (3.7)	10.30 (3.5)	10.03 (3.7)
No. of posterior teeth, mean (SD)	11.69 (5.3)	11.59 (5.3)	11.72 (5.1)	11.12 (5.3)
Incisors, mean (SD)	6.70 (2.6)	6.69 (2.5)	6.80 (2.4)	6.61 (2.6)
Canines, mean (SD)	3.45 (1.2)	3.45 (1.2)	3.51 (1.1)	3.43 (1.2)
Premolars, mean (SD)	6.18 (2.7)	6.15 (2.6)	6.23 (2.5)	5.99 (2.6)
Molars, mean (SD)	5.51 (3.0)	5.45 (2.9)	5.49 (2.9)	5.13 (2.9)
Edentulous, no. (%)	4,058 (6.9)	2,356 (8.0)	1,464 (6.8)	1,463 (8.0)

* Of a total of 59,062 participants with survival data, 8,298 participants did not complete dental examinations and an additional 4,250 had missing data on existing health conditions, cigarette smoking status, body mass index measurements (calculated as weight in kilograms divided by height in meters squared), income or education information, leaving 41,866 participants. Among these, 29,510 answered "last dental visit," 21,488 answered "self-rated oral health (teeth and gums)," and 18,392 answered "dental flossing frequencies." † Self-rated oral health (teeth and gingivae).

eTable 2. Characteristics of National Health and Nutrition Examination Survey participants according to their last dental visit.

CHARACTERISTIC	TOTAL	LAST DENTAL VISIT			P VALUE*
		≤ 1 y	> 1 and ≤ 3 y	> 3 y	
Participants, No.	29,510	16,086	6,052	7,372	Not applicable
Age, Y, Mean (SD)	49.09 (18.1)	49.51 (17.8)	46.00 (17.6)	50.73 (18.8)	< .001
Sex, No. (%)					
Male	14,270 (48.4)	7,209 (44.8)	2,953 (48.8)	4,108 (55.7)	
Female	15,240 (51.6)	8,877 (55.2)	3,099 (51.2)	3,264 (44.3)	< .001
Race and Ethnicity, No. (%)					
White	12,922 (43.8)	7,751 (48.2)	2,285 (37.8)	2,886 (39.1)	
Black	6,198 (21.0)	3,045 (18.9)	1,466 (24.2)	1,687 (22.9)	
Hispanic	7,104 (24.1)	3,338 (20.8)	1,642 (27.1)	2,124 (28.8)	< .001
Other	3,286 (11.1)	1,952 (12.1)	659 (10.9)	675 (9.2)	
Education, No. (%)					
< High school	7,214 (24.4)	2,698 (16.8)	1,607 (26.6)	2,909 (39.5)	
High school or equivalent	6,718 (22.8)	3,330 (20.7)	1,461 (24.1)	1,927 (26.1)	< .001
> High school	15,578 (52.8)	10,058 (62.5)	2,984 (49.3)	2,536 (34.4)	
Cigarette Smoking, No. (%)					
Never	16,203 (54.9)	9,537 (59.3)	3,286 (54.3)	3,381 (45.9)	< .001
Past	7,314 (24.8)	4,103 (25.5)	1,359 (22.5)	1,852 (25.1)	< .001
Current	5,992 (20.3)	2,446 (15.2)	1,407 (23.2)	2,139 (29.0)	< .001
Body Mass Index,† Mean (SD)	28.96 (6.8)	28.62 (6.5)	29.34 (7.1)	29.40 (7.2)	< .001
Income to Poverty Ratio, Mean (SD)	2.55 (1.63)	2.98 (1.7)	2.29 (1.5)	1.84 (1.3)	< .001
Physical Activity, No. (%)					
Sedentary	15,767 (53.4)	8,633 (53.7)	3,224 (53.3)	3,910 (53.0)	
Insufficient	3,547 (12.0)	1,640 (10.2)	783 (12.9)	1,124 (15.2)	< .001
Moderate	5,223 (17.7)	2,884 (17.9)	1,056 (17.4)	1,283 (17.4)	
Vigorous	4,973 (16.9)	2,929 (18.2)	989 (16.3)	1,055 (14.3)	
Dental					
Teeth, no., mean (SD)	21.73 (8.6)	23.35 (6.7)	21.88 (8.3)	18.10 (11.1)	< .001
Anterior teeth, no., mean (SD)	10.14 (3.7)	10.85 (2.7)	10.25 (3.5)	8.50 (4.9)	< .001
Posterior teeth, no., mean (SD)	11.59 (5.3)	12.50 (4.4)	11.63 (5.2)	9.59 (6.5)	< .001
Edentulous, no. (%)	2,356 (8.0)	463 (2.9)	397 (6.6)	1,496 (20.3)	< .001
Systemic Conditions, No. (%)					
Hypertension	18,315 (62.1)	9,705 (60.3)	3,654 (60.4)	4,956 (67.2)	< .001
Total cardiovascular disease	2,444 (8.3)	1152 (7.2)	422 (7.0)	870 (11.8)	< .001
Stroke	1,037 (3.5)	437 (2.7)	196 (3.2)	404 (5.5)	< .001
Diabetes	4,215 (14.3)	2,084 (13.0)	864 (14.3)	1,267 (17.2)	< .001
All-Cause Mortality, No. (%)	2,937 (10.0)	1,312 (8.2)	514 (8.5)	1111 (15.1)	< .001
Maximum Follow-Up, Mo, Mean (SD)	80.52 (62.6)	81.90 (63.2)	81.03 (63.4)	77.08 (60.7)	< .001

* P values are from χ^2 test for categorical variables or analysis of variance test for continuous variables comparing groups.

† Calculated as weight in kilograms divided by height in meters squared.

eTable 3. Characteristics of National Health and Nutrition Examination Survey participants according to their self-rated oral health (teeth and gingivae).

CHARACTERISTIC	TOTAL	SELF-RATED ORAL HEALTH (TEETH AND GINGIVAE)					P VALUE*
		Excellent	Very Good	Good	Fair	Poor	
Participants, No.	21,488	2,328	4,509	7,542	4,818	2,291	Not applicable
Age, Y, Mean (SD)	49.72 (17.2)	51.67 (17.8)	49.34 (18.0)	49.15 (17.5)	49.27 (16.4)	51.32 (15.3)	< .001
Sex, No. (%)							
Male	10,508 (48.9)	1,063 (45.7)	2,160 (47.9)	3,664 (48.6)	2,442 (50.7)	1,179 (51.5)	< .001
Female	10,980 (51.1)	1,265 (54.3)	2,349 (52.1)	3,878 (51.4)	2,376 (49.3)	1,112 (48.5)	
Race and Ethnicity, No. (%)							
White	8,754 (40.7)	1,193 (51.2)	2,240 (49.7)	2,871 (38.1)	1,488 (30.9)	962 (42.0)	< .001
Black	4,684 (21.8)	416 (17.9)	862 (19.1)	1,704 (22.6)	1,175 (24.4)	527 (23.0)	
Hispanic	4,988 (23.2)	368 (15.8)	688 (15.3)	1,772 (23.5)	1,570 (32.6)	590 (25.8)	
Other	3,062 (14.2)	351 (15.1)	719 (15.9)	1,195 (15.8)	585 (12.1)	212 (9.2)	
Education, No. (%)							
< High school	4,638 (21.6)	326 (14.0)	474 (10.5)	1,493 (19.8)	1,515 (31.4)	830 (36.2)	< .001
High school or equivalent	4,780 (22.2)	404 (17.4)	806 (17.9)	1,716 (22.8)	1,220 (25.3)	634 (27.7)	
> High school	12,070 (56.2)	1,598 (68.6)	3,229 (71.6)	4,333 (57.4)	2,083 (43.2)	827 (36.1)	
Cigarette Smoking, No. (%)							
Never	12,104 (56.3)	1,500 (64.4)	2,884 (64.0)	4,464 (59.2)	2,441 (50.7)	815 (35.6)	< .001
Past	5,192 (24.2)	583 (25.0)	1,051 (23.3)	1,812 (24.0)	1,186 (24.6)	561 (24.4)	0.49
Current	4,192 (19.5)	245 (10.5)	574 (12.7)	1,266 (16.8)	1,191 (24.7)	916 (40.0)	< .001
Body Mass Index,[†] Mean (SD)	29.37 (7.1)	28.46 (6.6)	28.67 (6.7)	29.36 (7.1)	30.01 (7.2)	30.39 (7.9)	< .001
Income to Poverty Ratio, Mean (SD)	2.52 (1.6)	3.08 (1.7)	3.09 (1.6)	2.57 (1.6)	2.04 (1.5)	1.63 (1.2)	< .001
Physical Activity, No. (%)							
Sedentary	13,946 (64.9)	1,529 (65.7)	3,095 (68.6)	4,920 (65.2)	2,927 (60.8)	1,475 (64.4)	< .001
Insufficient	1,898 (8.8)	178 (7.6)	292 (6.5)	721 (9.6)	506 (10.5)	201 (8.8)	
Moderate	2,551 (11.9)	268 (11.5)	477 (10.6)	890 (11.8)	639 (13.3)	278 (12.1)	
Vigorous	3,093 (14.4)	353 (15.2)	645 (14.3)	1,011 (13.4)	746 (15.5)	338 (14.8)	
Dental							
Teeth, no., mean (SD)	22.03 (8.3)	22.50 (9.4)	23.87 (7.4)	22.35 (8.3)	21.66 (7.5)	17.66 (8.3)	< .001
Anterior teeth, no., mean (SD)	10.30 (3.5)	10.11 (4.1)	10.82 (3.1)	10.36 (3.6)	10.42 (3.1)	9.05 (3.7)	< .001
Posterior teeth, no., mean (SD)	11.72 (5.1)	12.39 (5.5)	13.04 (4.5)	11.99 (5.1)	11.23 (4.8)	8.61 (5.1)	< .001
Edentulous, no. (%)	1,462 (6.8)	284 (12.2)	275 (6.1)	586 (7.8)	193 (4.0)	126 (5.5)	< .001
Systemic Conditions, No. (%)							
Hypertension	13,522 (62.9)	1,436 (61.7)	2,713 (60.2)	4,640 (61.5)	3,139 (65.2)	1,594 (69.5)	< .001
Total cardiovascular disease	1,681 (7.8)	167 (7.2)	278 (6.2)	518 (6.9)	397 (8.2)	321 (14.0)	< .001
Stroke	785 (3.7)	77 (3.3)	136 (3.0)	237 (3.1)	196 (4.1)	139 (6.1)	< .001
Diabetes	3,482 (16.2)	313 (13.4)	557 (12.4)	1,213 (16.1)	877 (18.2)	522 (22.8)	< .001
All-Cause Mortality, No. (%)	791 (3.7)	77 (3.3)	117 (2.6)	292 (3.9)	188 (3.9)	117 (5.1)	< .001
Maximum Follow-Up, Mo, Mean (SD)	41.57 (18.7)	42.15 (19.0)	40.76 (18.7)	41.93 (18.7)	41.39 (18.5)	41.77 (18.6)	.004

* P values are from χ^2 test for categorical variables or analysis of variance test for continuous variables comparing groups. † Calculated as weight in kilograms divided by height in meters squared.

eTable 4. Characteristics of National Health and Nutrition Examination Survey participants according to their dental flossing frequency.

CHARACTERISTIC	TOTAL	DENTAL FLOSSING FREQUENCY			P VALUE*
		7 Times/wk	3-6 Times/wk	≤2 Times/wk	
Participants, No.	18,392	5,856	3,309	9,227	Not applicable
Age, Y, Mean (SD)	53.98 (14.8)	54.82 (14.2)	51.11 (13.8)	54.47 (15.4)	< .001
Sex, No. (%)					
Male	9,000 (48.9)	2,379 (40.6)	1,451 (43.9)	5,170 (56.0)	
Female	9,392 (51.1)	3,477 (59.4)	1,858 (56.1)	4,057 (44.0)	< .001
Race and Ethnicity, No. (%)					
White	7,712 (41.9)	2,282 (39.0)	1,490 (45.0)	3,940 (42.7)	
Black	3,959 (21.5)	1,154 (19.7)	701 (21.2)	2,104 (22.8)	
Hispanic	4,239 (23.0)	1,483 (25.3)	694 (21.0)	2,062 (22.3)	< .001
Other	2,482 (13.5)	937 (16.0)	424 (12.8)	1,121 (12.1)	
Education, No. (%)					
< High school	4,232 (23.0)	1,037 (17.7)	467 (14.1)	2,728 (29.6)	
High school or equivalent	4,040 (22.0)	1,202 (20.5)	657 (19.9)	2,181 (23.6)	< .001
> High school	10,120 (55.0)	3,617 (61.8)	2,185 (66.0)	4,318 (46.8)	
Cigarette Smoking, No. (%)					
Never	9,986 (54.3)	3,450 (58.9)	1,949 (58.9)	4,587 (49.7)	< .001
Past	4,871 (26.5)	1,556 (26.6)	831 (25.1)	2,484 (26.9)	.11
Current	3,535 (19.2)	850 (14.5)	529 (16.0)	2,156 (23.4)	< .001
Body Mass Index,[†] Mean (SD)	29.64 (7.0)	29.21 (6.8)	30.19 (7.2)	29.71 (7.1)	< .001
Income to Poverty Ratio, Mean (SD)	2.58 (1.6)	2.83 (1.7)	2.94 (1.6)	2.28 (1.6)	< .001
Physical Activity, No. (%)					
Sedentary	11,736 (63.8)	3,680 (62.8)	2,183 (66.0)	5,873 (63.7)	
Insufficient	1,793 (9.7)	538 (9.2)	245 (7.4)	1,010 (10.9)	< .001
Moderate	2,343 (12.7)	799 (13.6)	393 (11.9)	1,151 (12.5)	
Vigorous	2,520 (13.7)	839 (14.3)	488 (14.7)	1,193 (12.9)	
Dental					
Teeth, no., mean (SD)	21.15 (8.6)	23.39 (5.5)	24.00 (5.5)	18.71 (10.2)	< .001
Anterior teeth, no., mean (SD)	10.03 (3.7)	11.10 (2.1)	11.25 (2.0)	8.92 (4.5)	< .001
Posterior teeth, no., mean (SD)	11.12 (5.3)	12.29 (3.9)	12.75 (3.9)	9.79 (6.0)	< .001
Edentulous, no. (%)	1,463 (8.0)	48 (0.8)	25 (0.8)	1,390 (15.1)	< .001
Systemic Conditions, No. (%)					
Hypertension	12,582 (68.4)	3,942 (67.3)	2,175 (65.7)	6,465 (70.1)	< .001
Total cardiovascular disease	1,675 (9.1)	433 (7.4)	207 (6.3)	1,035 (11.2)	< .001
Stroke	772 (4.2)	180 (3.1)	98 (3.0)	494 (5.4)	< .001
Diabetes	3,413 (18.6)	977 (16.7)	515 (15.6)	1,921 (20.8)	< .001
All-Cause Mortality, No. (%)	775 (4.2)	169 (2.9)	76 (2.3)	530 (5.7)	< .001
Maximum Follow-Up, Mo, Mean (SD)	42.34 (19.3)	41.88 (18.8)	43.28 (19.2)	42.29 (19.6)	.009

* P values are from χ^2 test for categorical variables or analysis of variance test for continuous variables comparing groups.

† Calculated as weight in kilograms divided by height in meters squared.

eTable 5. Cox proportional hazard regression survival analyses for all-cause mortality according to the National Health and Nutrition Examination Survey participants' last dental visit (n = 2,9510 participants, n = 2,937 events).

VARIABLES FOR FIGURE 2A	HAZARD RATIO (95% CI)	P VALUE	VARIABLES FOR FIGURE 2D	HAZARD RATIO (95% CI)	P VALUE
Participants' Last Dental Visit			Participants' Last Dental Visit		
≤ 1 y	[Reference]	Not applicable	≤ 1 y	[Reference]	Not applicable
> 1 y	1.17 (1.08 to 1.27)	2.37e ⁻⁰⁴	> 1 y and ≤ 3 y	1.11 (1.00 to 1.24)	.047
			> 3 y	1.21 (1.10 to 1.33)	7.62e ⁻⁰⁵
Other Covariates			Other Covariates		
Age	1.08 (1.07 to 1.08)	0	Age	1.08 (1.07 to 1.08)	0
Male	1.43 (1.32 to 1.54)	8.40e ⁻²⁰	Male	1.42 (1.32 to 1.53)	1.28e ⁻¹⁹
Race and ethnicity			Race and ethnicity		
Black	0.93 (0.84 to 1.03)	.176	Black	0.93 (0.84 to 1.04)	.199
Hispanic	0.80 (0.73 to 0.89)	3.32e ⁻⁰⁵	Hispanic	0.81 (0.73 to 0.90)	4.13e ⁻⁰⁵
Others	0.64 (0.52 to 0.79)	2.84e ⁻⁰⁵	Others	0.64 (0.52 to 0.79)	3.01e ⁻⁰⁵
Current cigarette smoker	1.63 (1.46 to 1.81)	1.42e ⁻¹⁸	Current cigarette smoker	1.64 (1.47 to 1.82)	2.12e ⁻¹⁸
Past cigarette smoker	1.14 (1.04 to 1.24)	.00332	Past cigarette smoker	1.14 (1.04 to 1.24)	.00323
Body mass index*	0.98 (0.98 to 0.99)	2.12e ⁻⁰⁶	Body mass index	0.98 (0.98 to 0.99)	2.35e ⁻⁰⁶
High school or equivalent	1.03 (0.93 to 1.14)	.535	High school or equivalent	1.04 (0.94 to 1.15)	.499
More than high school	0.93 (0.84 to 1.02)	.124	Above high school	0.93 (0.85 to 1.03)	.151
Income to poverty ratio	0.90 (0.88 to 0.93)	8.99e ⁻¹²	Income to poverty ratio	0.91 (0.88 to 0.93)	1.21e ⁻¹¹
Physical activity			Physical activity		
Insufficient	0.79 (0.71 to 0.88)	8.23e ⁻⁰⁶	Insufficient	0.79 (0.72 to 0.88)	8.46e ⁻⁰⁵
Moderate	0.70 (0.64 to 0.77)	6.44e ⁻¹⁴	Moderate	0.70 (0.64 to 0.77)	1.00e ⁻¹³
Vigorous	0.58 (0.50 to 0.66)	1.47e ⁻¹⁴	Vigorous	0.58 (0.50 to 0.67)	1.88e ⁻¹⁴
Total cardiovascular disease	1.55 (1.42 to 1.69)	1.05e ⁻²²	Total cardiovascular disease	1.55 (1.42 to 1.69)	1.63e ⁻²²
Diabetes	1.35 (1.24 to 1.48)	7.86e ⁻¹²	Diabetes	1.36 (1.25 to 1.49)	7.64e ⁻¹²
Hypertension	1.00 (0.91 to 1.11)	.932	Hypertension	1.00 (0.90 to 1.11)	.933
Stroke	1.38 (1.22 to 1.56)	1.85e ⁻⁰⁷	Stroke	1.38 (1.22 to 1.56)	1.73e ⁻⁰⁷
Teeth, no. (1 additional)	0.99 (0.98 to 0.99)	3.94e ⁻⁰⁸	Teeth, no. (1 additional)	0.99 (0.98 to 0.99)	1.92e ⁻⁰⁷

* Calculated as weight in kilograms divided by height in meters squared.

eTable 6. Cox proportional hazard regression survival analyses for all-cause mortality according to the National Health and Nutrition Examination Survey participants' levels of responses to the self-rated oral health (teeth and gingivae) (n = 21,488 participants, n = 791 events).

VARIABLES FOR FIGURE 2B	HAZARD RATIO (95% CI)	P VALUE	VARIABLES FOR FIGURE 2E	HAZARD RATIO (95% CI)	P VALUE
Self-Rated Oral Health			Self-Rated Oral Health		
Excellent, very good, good	[Reference]	Not applicable	Excellent	[Reference]	Not applicable
Fair, poor	1.18 (1.02 to 1.37)	.027	Very good	0.95 (0.71 to 1.27)	.72
			Good	1.32 (1.03 to 1.70)	.03
			Fair	1.39 (1.06 to 1.82)	.016
			Poor	1.36 (1.01 to 1.83)	.041
Other Covariates			Other Covariates		
Age	1.06 (1.06 to 1.07)	1.04e ⁻⁶⁶	Age	1.06 (1.06 to 1.07)	8.18e ⁻⁶⁷
Male	1.45 (1.25 to 1.69)	1.22e ⁻⁰⁶	Male	1.45 (1.25 to 1.68)	1.41e ⁻⁰⁶
Race and ethnicity			Race and ethnicity		
Black	0.78 (0.65 to 0.95)	.012	Black	0.77 (0.63 to 0.93)	.00598
Hispanic	0.72 (0.58 to 0.89)	.0025	Hispanic	0.71 (0.57 to 0.87)	.00128
Others	0.59 (0.44 to 0.79)	.000381	Others	0.58 (0.43 to 0.77)	.000215
Current cigarette smoker	1.21 (0.98 to 1.50)	.0746	Current cigarette smoker	1.21 (0.97 to 1.49)	.0847
Past cigarette smoker	1.12 (0.95 to 1.33)	.164	Past cigarette smoker	1.12 (0.95 to 1.32)	.17
Body mass index*	0.98 (0.96 to 0.99)	.000184	Body mass index	0.98 (0.96 to 0.99)	.000157
High school or equivalent	1.00 (0.83 to 1.21)	.995	High school or equivalent	1.01 (0.83 to 1.22)	.949
More than high school	0.98 (0.82 to 1.18)	.856	Above high school	1.00 (0.83 to 1.20)	.983
Income to poverty ratio	0.87 (0.82 to 0.92)	5.42e ⁻⁰⁷	Income to poverty ratio	0.87 (0.82 to 0.92)	1.38e ⁻⁰⁶
Physical activity			Physical activity		
Insufficient	0.77 (0.61 to 0.97)	.0275	Insufficient	0.76 (0.60 to 0.96)	.024
Moderate	0.66 (0.52 to 0.83)	.000582	Moderate	0.66 (0.52 to 0.83)	.000571
Vigorous	0.53 (0.39 to 0.73)	.000114	Vigorous	0.54 (0.39 to 0.74)	.000153
Total cardiovascular disease	1.69 (1.44 to 2.00)	3.54e ⁻¹⁰	Total cardiovascular disease	1.68 (1.43 to 1.99)	6.32e ⁻¹⁰
Diabetes	1.34 (1.14 to 1.57)	.000302	Diabetes	1.32 (1.13 to 1.55)	.000502
Hypertension	0.94 (0.77 to 1.16)	.566	Hypertension	0.95 (0.77 to 1.16)	.594
Stroke	1.38 (1.11 to 1.70)	.00321	Stroke	1.40 (1.13-1.73)	.00209
Teeth, no. (1 additional)	0.98 (0.97-0.98)	1.03e ⁻⁰⁹	Teeth, no. (1 additional)	0.98 (0.97-0.98)	1.63e ⁻⁰⁹

* Calculated as weight in kilograms divided by height in meters squared.

eTable 7. Cox proportional hazard regression survival analyses for all-cause mortality according to the National Health and Nutrition Examination Survey participants' frequencies of dental flossing (n = 18,392 participants, n = 775 events).

VARIABLES FOR FIGURE 2C	HAZARD RATIO (95% CI)	P VALUE	VARIABLES FOR FIGURE 2F	HAZARD RATIO (95% CI)	P VALUE
Frequency of Dental Flossing			Frequency of Dental Flossing		
≥ 3 Times/wk	[Reference]	Not applicable	7 Times/wk	[Reference]	Not applicable
≤ 2 Times/wk	1.27 (1.07 to 1.51)	.00586	≥ 3 and ≤ 6 Times/wk	0.96 (0.73 to 1.26)	.762
			≤ 2 Times/wk	1.26 (1.04 to 1.53)	.0199
Other Covariates			Other Covariates		
Age	1.07 (1.06 to 1.07)	6.56e ⁻⁶³	Age	1.07 (1.06 to 1.07)	1.3e ⁻⁶²
Male	1.37 (1.18 to 1.60)	.0000534	Male	1.37 (1.18 to 1.60)	5.25e ⁻⁰⁵
Race and ethnicity			Race and ethnicity		
Black	0.81 (0.66 to 0.98)	.0269	Black	0.81 (0.67 to 0.98)	.027
Hispanic	0.76 (0.62 to 0.94)	.0129	Hispanic	0.76 (0.61 to 0.94)	.0126
Others	0.60 (0.45 to 0.81)	.000847	Others	0.60 (0.45 to 0.81)	.000828
Current cigarette smoker	1.22 (0.98 to 1.52)	.0736	Current cigarette smoker	1.22 (0.98 to 1.52)	.0737
Past cigarette smoker	1.15 (0.98 to 1.36)	.0916	Past cigarette smoker	1.15 (0.98 to 1.36)	.0915
Body mass index*	0.97 (0.96 to 0.99)	.0000753	Body mass index	0.97 (0.96 to 0.99)	.000079
High school or equivalent	0.97 (0.80 to 1.17)	.739	High school or equivalent	0.97 (0.80 to 1.17)	.737
Above high school	0.99 (0.82 to 1.19)	.92	Above high school	0.99 (0.82 to 1.19)	.922
Income to poverty ratio	0.87 (0.82 to 0.92)	9.65e ⁻⁰⁷	Income to poverty ratio	0.87 (0.82 to 0.92)	9.84e ⁻⁰⁷
Physical activity			Physical activity		
Insufficient	0.76 (0.60 to 0.97)	.0276	Insufficient	0.76 (0.60 to 0.97)	.0275
Moderate	0.64 (0.50 to 0.81)	.000305	Moderate	0.64 (0.50 to 0.81)	.000307
Vigorous	0.50 (0.35 to 0.70)	.0000495	Vigorous	0.50 (0.35 to 0.70)	4.92e ⁻⁰⁵
Total cardiovascular disease	1.70 (1.44 to 2.01)	2.83e ⁻¹⁰	Total cardiovascular disease	1.70 (1.44 to 2.01)	2.84e ⁻¹⁰
Diabetes	1.35 (1.15 to 1.58)	.000235	Diabetes	1.35 (1.15 to 1.58)	.000238
Hypertension	0.95 (0.77 to 1.16)	.598	Hypertension	0.95 (0.77 to 1.16)	.597
Stroke	1.38 (1.12 to 1.71)	.00295	Stroke	1.38 (1.12 to 1.71)	.0029
Teeth, no. (1 additional)	0.98 (0.97 to 0.99)	5.14e ⁻⁰⁶	Teeth, no. (1 additional)	0.98 (0.97 to 0.99)	4.99e ⁻⁰⁶

* Calculated as weight in kilograms divided by height in meters squared.

eTable 8. Full model output of multivariate logistic regression analyses for associations of total cardiovascular disease events according to the Women's Health Study participants' self-rated oral health (teeth and gingivae; Table 3) (n = 14,663 participants, n = 845 events).

VARIABLE	ODDS RATIO (95% CI)	P VALUE	VARIABLE	SENSITIVITY ANALYSIS	
				Odds Ratio (95% CI)	P Value
Self-Rated Oral Health			Self-Rated Oral Health		
Excellent	[Reference]	NA*	Excellent	[Reference]	NA
Very good	1.04 (0.83 to 1.31)	.724	Very Good	1.02 (0.81 to 1.29)	.864
Good	1.27 (1.02 to 1.59)	.037	Good	1.29 (1.03 to 1.62)	.029
Fair	1.51 (1.15 to 1.98)	2.92e ⁻⁰³	Fair	1.56 (1.18 to 2.05)	1.69e ⁻⁰³
Poor	1.92 (1.22 to 2.94)	3.45e ⁻⁰³	Poor	1.79 (1.11 to 2.79)	.013
Other Covariates			Other Covariates		
Age at oral health questions	1.07 (1.05 to 1.08)	6.02e ⁻²³	Age at oral health questions	1.07 (1.05 to 1.08)	1.25e ⁻²³
Bachelor's degree or higher	0.91 (0.79 to 1.06)	.215	Bachelor's degree or higher	0.92 (0.79 to 1.08)	.317
Cigarette smoking			Cigarette smoking		
Past	1.00 (0.86 to 1.17)	.978	Past	0.99 (0.92 to 1.07)	.940
Current	1.96 (1.56 to 2.45)	3.35e ⁻⁰⁹	Current	1.90 (1.50 to 2.39)	4.95e ⁻⁰⁸
Body mass index [†]	1.04 (1.02 to 1.05)	4.10e ⁻⁰⁷	Body mass index	1.04 (1.03 to 1.06)	1.46e ⁻⁰⁷
Hypertension	1.61 (1.36 to 1.89)	1.40e ⁻⁰⁸	Hypertension	1.57 (1.33 to 1.86)	1.49e ⁻⁰⁷
Hypercholesterolemia	1.28 (1.10 to 1.49)	1.73e ⁻⁰³	Hypercholesterolemia	1.24 (1.06 to 1.46)	6.91e ⁻⁰³
Physical activity (4 groups)	0.96 (0.89 to 1.03)	.211	Physical activity (4 groups)	0.98 (0.91 to 1.05)	.572
Income (4 groups)	NA	NA	Income (4 groups)	0.99 (0.92 to 1.07)	.824

* NA: Not applicable. † Calculated as weight in kilograms divided by height in meters squared.